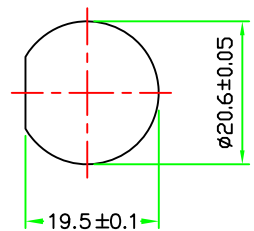
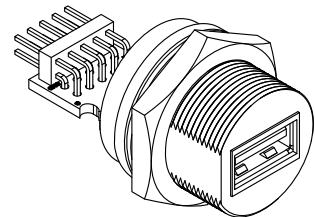
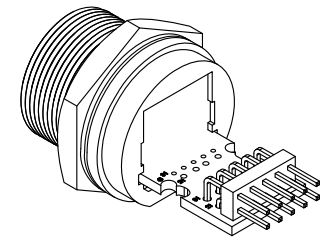
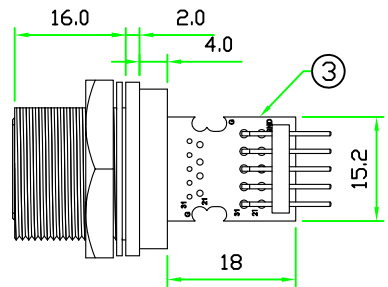
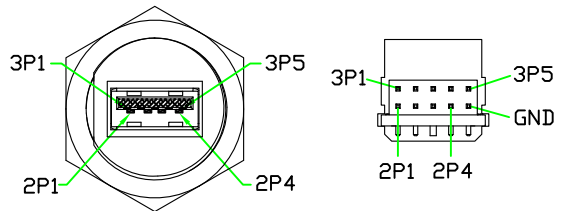
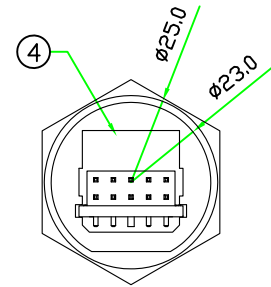
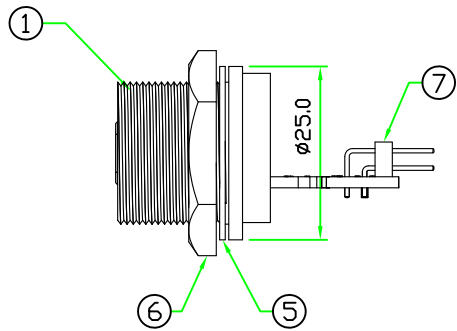
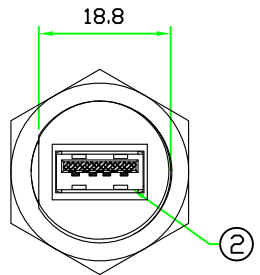


REV	DESCRIPTION	DATE
A	ISSUE	OCT/03/2012

RoHS



RECOMMENDED PANEL CUT-OFF



PIN ASSIGNMENT FRONT VIEW

7	PIN HEADER	PITCH 2.54mm 5P*2RAW RIGHT ANGLE PIN HEADER .	BLACK	1	
6	HEX NUT	NYLON+GF.	BLACK	1	C-NUT (42-135)
5	GASKET	EPDM.	BLACK	1	CCA-G-EP70
4	GLUE	EPOXY.	BLACK	1	
3	PCB	FR4 . DOUBLE SIDE, 1.6mm THICKNESS.		1	USBAC-PCB
2	CONNECTOR	USB 3.0 A TYPE FEMALE CONNECTOR.	BLUE	1	JWX0002-15U-1
1	BODY	USB A TYPE FEMALE CONNECTOR BODY. NYLON+GF.	BLACK	1	USBAC-P3C (89-135-N3-3)
No.	PART NAME	DESCRIPTION	COLOR	Q'TY	REMARKS

**HOLIN®** **Allconnectors**  
www.allconnectors.eu | info@allconnectors.eu  
Tel. +49 (0)711 / 358 110 20 | Fax +49 (0)711 / 358 110 25

**UNIT:** mm **SCALE:** 1:1

**TITLE :** USB 3.0 A TYPE FEMALE C SIZE SCREW TYPE CIRCULAR FLANGE PANEL WITH RIGHT ANGLE PIN HEADER

**P/N:** USB3AC-P3C12 **DR. JAEK**

**DWG.NO:** USB3AC-P3C12 **CH. Michael**

**REV. A SHEET 1/1** **AP.**

UNLESS OTHERWISE SPECIFIED TOLERANCES:  
x ±0.25 xx ± 0.1  
xxx ± 0.05 ANGLE ± 1°