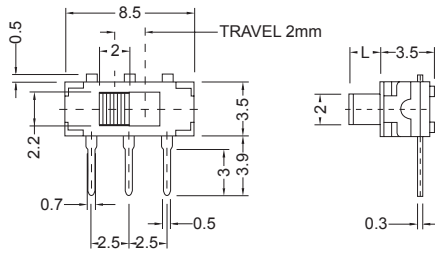


INDEX
TOGGLE
ROCKER
SLIDE
PUSH BUTTON
DIP
TACT

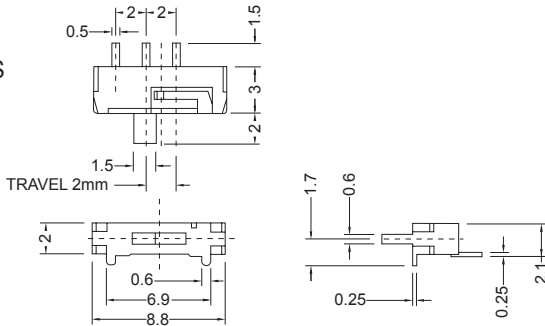
SHM-1260 SERIES



1. Rating: DC6V 0.3A
2. Circuit: 1P2T
3. Timing: Non-Shorting
4. Travel: 2mm
5. Operating Force: 200±100gf

Model No.	Knob"L"
SHM-1260	2.0mm

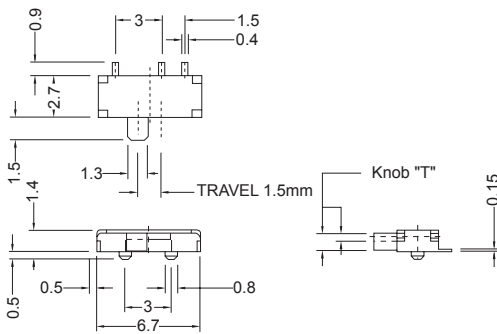
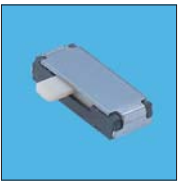
SHM-1270 SERIES



1. Rating: DC6V 0.3A
2. Circuit: 1P2T
3. Timing: Non-Shorting
4. Travel: 2mm
5. Operating Force: 150±100gf

Model No.	Description
SHM-1270	lock with embossing cover
SHM-1270N	lock without embossing cover
SHM-1270R	non lock with embossing cover
SHM-1270RN	non lock without embossing cover

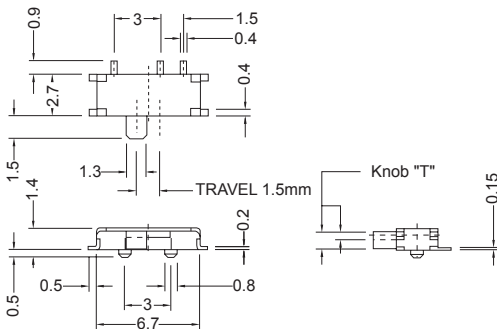
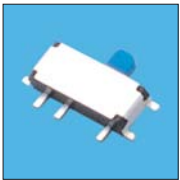
**SHM-1290AN □
SHM-1290BN**



1. Rating: DC4V 0.3A
2. Circuit: 1P2T
3. Timing: Non-Shorting
4. Travel: 1.5mm
5. Operating Force: 150±100gf

Model No.	Knob"T"
SHM-1290AN	0.4mm
SHM-1290BN	1.1mm

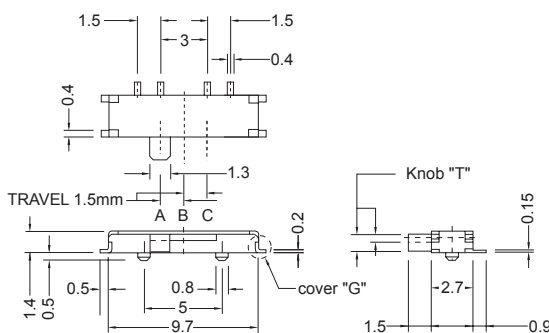
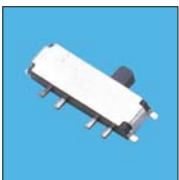
**SHM-1290AP □
SHM-1290BP**



1. Rating: DC4V 0.3A
2. Circuit: 1P2T
3. Timing: Non-Shorting
4. Travel: 1.5mm
5. Operating Force: 150±100gf

Model No.	Knob"T"
SHM-1290AP	0.4mm
SHM-1290BP	1.1mm

SHM-1300 SERIES



1. Rating: DC4V 0.3A
2. Circuit: 1P3T
3. Timing: Non-Shorting
4. Travel: 1.5mm + 1.5mm
5. Operating Force: A→B, C→B =150±100gf
B→A, B→C =200±150gf

Model No.	Knob"T"	cover "G"
SHM-1300AN	0.4mm	NO
SHM-1300BN	1.1mm	NO
SHM-1300AP	0.4mm	YES
SHM-1300BP	1.1mm	YES