

YTL series circular electrical connector



Part number

	YTL	38	P	1	-07	S	B	W	B ₁
Basic series									
Shell size									
32, 38, 52									
Type of connector									
P = Plug									
R = Receptacle									
Type of plug									
0 = Plug without locking device									
1 = Plug with locking device									
Contact number									
See below									
Type of contact									
P = Pin									
S = Socket									
Type of contact									
B ~ U (if you need detailed datasheet about the contact, please contact us.)									
Type of back shell									
N, W, T									
Finish									
B ₁ = Cadmium plating									
P ₁ = Electroless nickel plating with blast sand									

Electrical performance

Contact resistance: ≤ 1.5 mΩ, Rated current: 15 A

Rated operating voltage: 500V, AC/DC

Withstanding voltage: 3250V, AC

Insulation resistance: ≥ 5000 MΩ (Normal); ≥ 500 MΩ (Damp heat); ≥ 200 MΩ (High temperature)

Mechanical performance

Endurance: 750 cycles

Insertion and withdrawal force of contact: 1.5N ~ 3.0N

Cross section of conductor: 0.5 mm² ~ 1.5mm²

Environmental performance

Operating temperature: -40 °C ~ +100 °C

Humidity: 92% ~ 95% (40 °C)

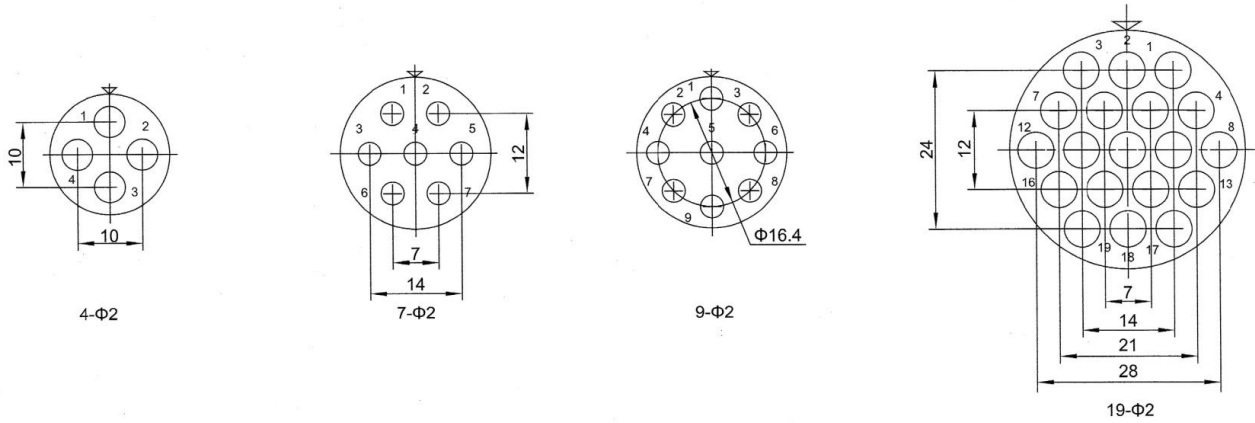
Vibration: 1 ~ 10 Hz, amplitude 7.5 mm; 10 ~ 55 Hz, amplitude 0.6 mm; 55 ~ 500 Hz, 60 m/s²

Material

Shell: Aluminum-alloy, Contact: Copper-alloy

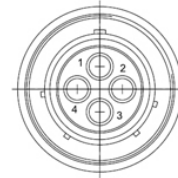
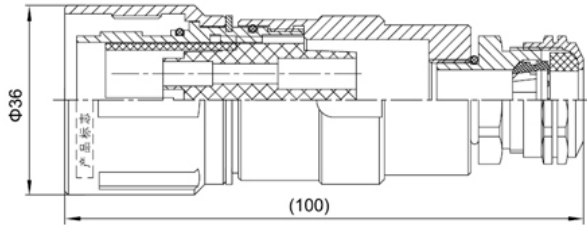
Finish of contact: Silver or gold plating

Contact layout

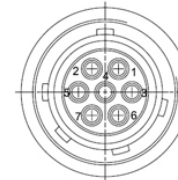
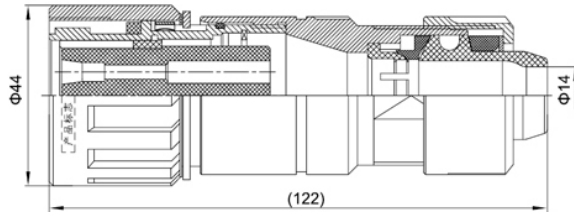


Shell size

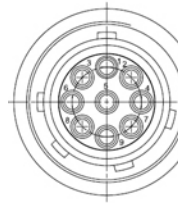
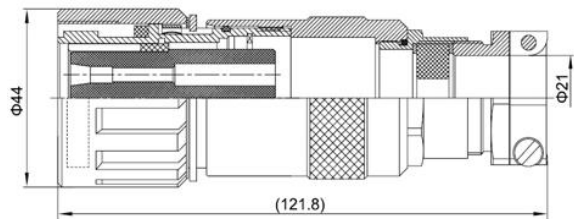
Plug (YTL32P-04PSB₁)



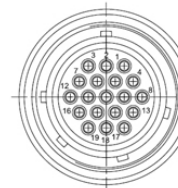
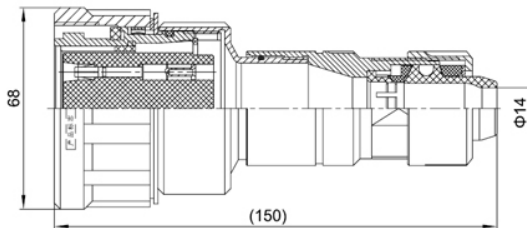
Plug (YTL38P1-07SBWB₁)



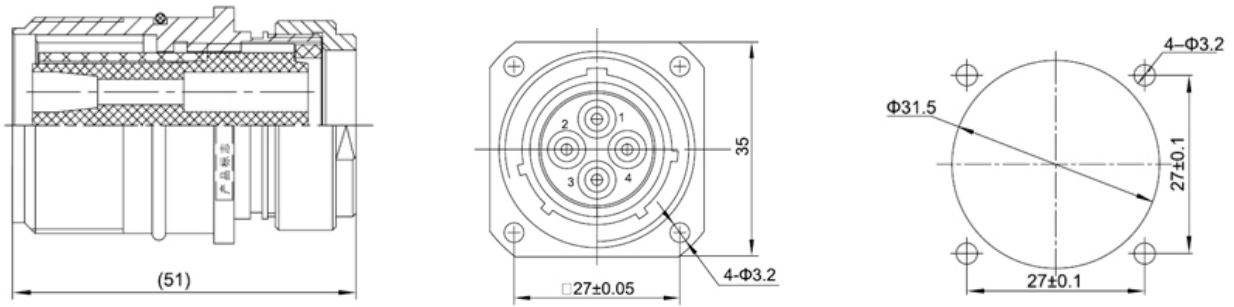
Plug (YTL38P1-09SHTB₁)



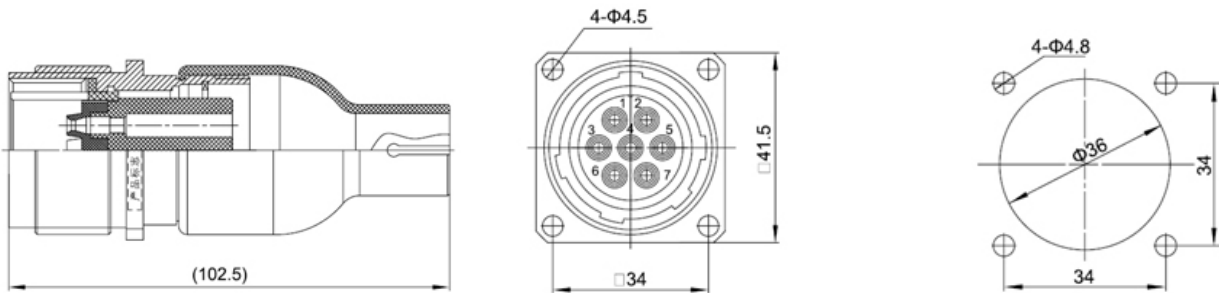
Plug (YTL52P1-19SBWB₁)



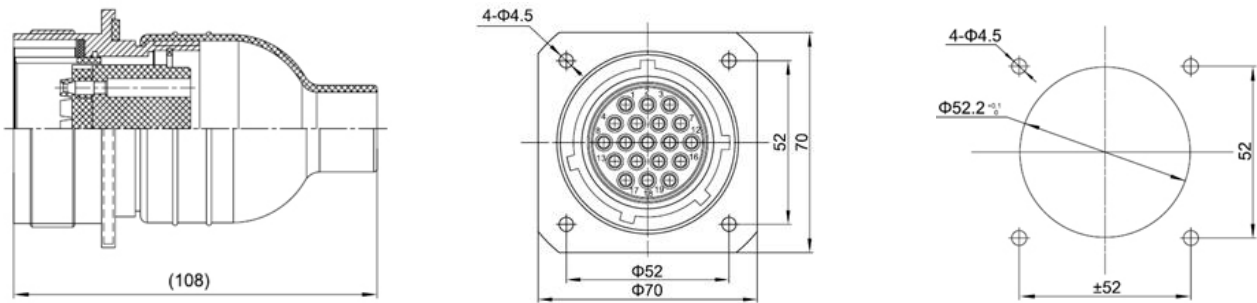
Receptacle (YTL32R-04SB₁)



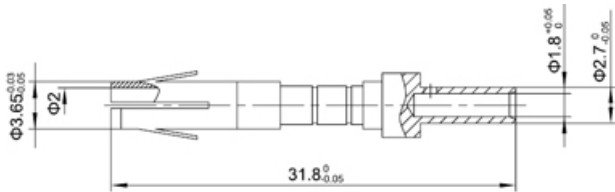
Receptacle (YTL38R-07PBNB₁)



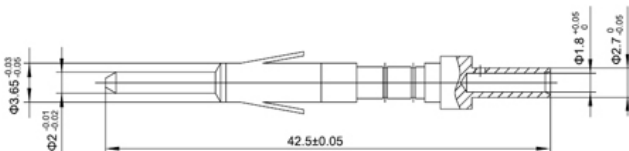
Receptacle (YTL52R-19PBNB₁)



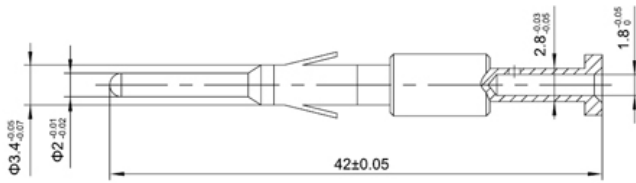
Socket (YTL32-2S)



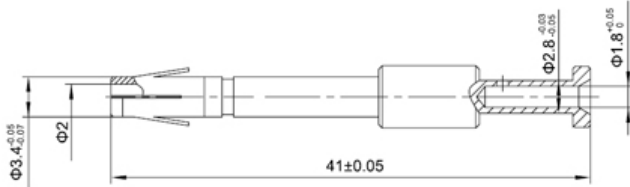
Pin (YTL32-2P)



Pin (YTL38-2PB)



Socket (YTL38-2SB)



Socket (YTL38-2SH)

